

SEGMENTED TIRES

| DESCRIPTION | B.C. | OD | ID | W |
|--------------------------------|------------|--------|-------|-------|
| 4 x 8 Laminated Tire - Flat | 4 on 5.00" | 15.00" | 8.00" | 4.00" |
| 5 x 8 Laminated Tire - Crowned | 4 on 5.00" | 15.00" | 8.00" | 5.00" |
| 6 x 9 Laminated Tire - Crowned | 5 on 5.50" | 20.00" | 9.00" | 6.00" |

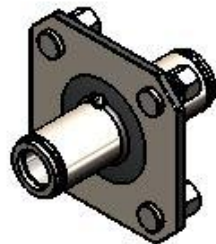
FORK HUBS

| MODEL # | CAP LBS. | HUB COMP | HUB CUPS | BOLT CIRCLE | NO. OF BOLTS |
|---------|----------|----------|----------|-------------|--------------|
| G10-4 | 1,000 | G281100 | G281101 | 5.00" | 4-BOLT |
| FH-O-1 | TBA | TBA | TBA | 5.00" | 4-BOLT |
| GM870 | 1,250 | TWH | TWH | 5.00" | 4-BOLT |

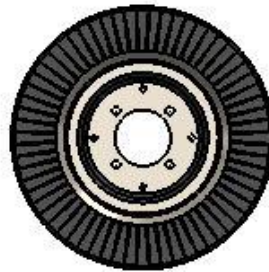
FORKS

| PART # | SHAFT SIZE | BOLT SIZE | COLOR | WEIGHT |
|------------------|--------------|------------|-------|---------|
| 04-TW400X8-FORK1 | 1-1/2" SHAFT | 1.00" BOLT | BLACK | 17 lbs. |
| 04-TW400X8-YOKE | 1-1/2" SHAFT | 3/4" BOLT | BLACK | 17 lbs |
| 04-325-2604 | 1-1/4" SHAFT | 3/4" BOLT | BLACK | 16 lbs |

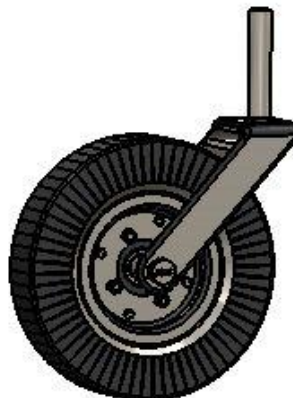
TAIL WHEEL HUB, FORK, AND 4X8 TIRE



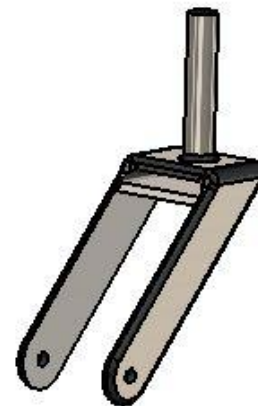
TAIL WHEEL HUB



4 X 8 SEGMENTED TIRE



TAIL WHEEL HUB, FORK, 4 X 8 TIRE



TAIL WHEEL FORK