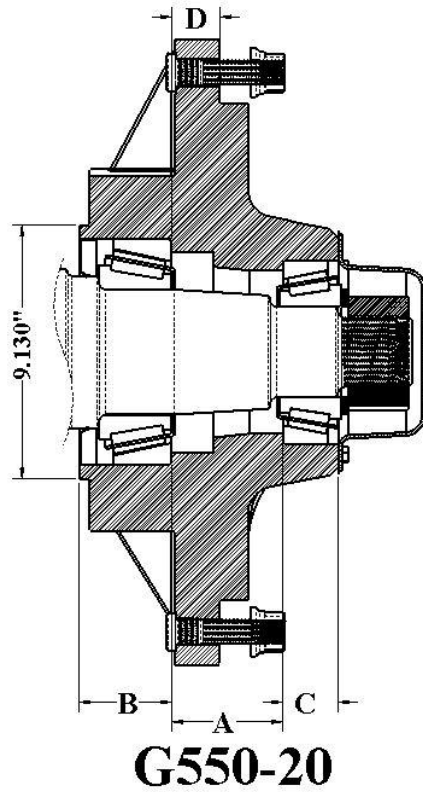


20-Bolt, 20.125" Bolt Circle, 17.82" Pilot

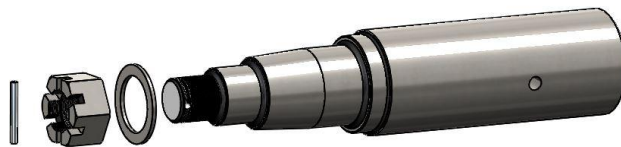


MOD	CAP LBS	HUB COMP	HUB CUPS	INNER CUP	OUTER CUP	INNER CONE	BORE DIA.	OUTER CONE	BORE DIA.	HUB CAP	STUD NUT	SEAL	A	B	C	D
G550-20	55000	G289194	G289193	G910400 930	G910405 832	G910401 938	4.50	G910406 842	3.25	G909924	G913475 G913480	G946550	4.00	3.33	2.00	1.63

Hub Capacity Based On 1.50" Offset.

Bolt Pattern For Brake Version Hub Is 10 On 11.00" B.C. (1/2-20 UNF).

G550-20 Hub Is Made From Ductile Material



L

FITS MOD #	MAT'L	MAT'L DIA.	SPINDLE PACKAGE	SPINDLE ONLY	WASHER	NUT	PIN	OVERALL LENGTH	THREAD	SEAL DIA.
G550-20	4140/1144	6.00"	G281939	G281938	G913640	G912978	G905959	27.500"	2-1/2-12	5.500

For customer specific spindle needs, please refer to the Spindle Special Order page (Page 5).